

Colchester Borough Council Chief Executive  
PAMELA DONNELLY

PA  
Julie Hunt

Executive Director Place

LINDSAY BARKER

PA  
Yvonne Townsend

- Place Services - Planning; Housing; Transport; Sustainability; Economic Development
- Client function for all Council-owned companies, Colchester Borough Homes and North Essex Garden Communities
- Communities

Assistant Director - Communities

LUCIE BREADMAN

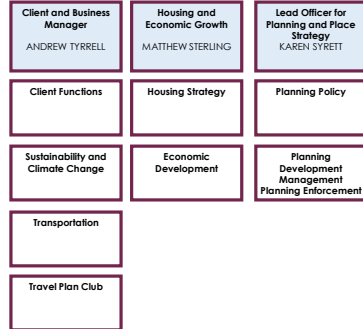
PA  
Katie Edwards/Jessica Philp



Assistant Director - Place and Client Services

MANDY JONES

PA  
Victoria Hanley



Chief Operating Officer

RICHARD BLOCK

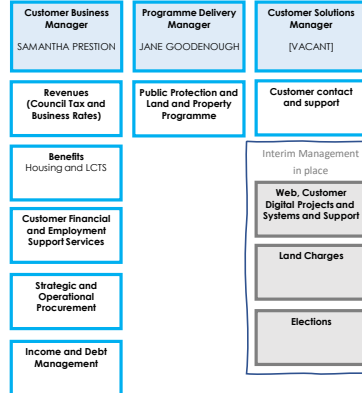
PA  
Marie Smith / Margaret Mabey

- Budget Strategy and Medium Term Financial Planning
- Corporate and Improvement Services
- Performance management and improvement planning
- Borough-wide Operational and Zone-based services
- Parking Partnership (NEPP)
- Customer

Assistant Director - Customer

LEONIE RATHBONE

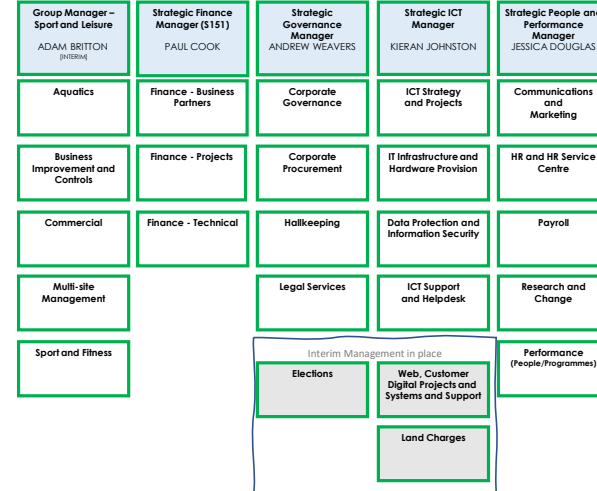
PA  
Maile Smith



Assistant Director – Corporate and Improvement Services

[VACANT]

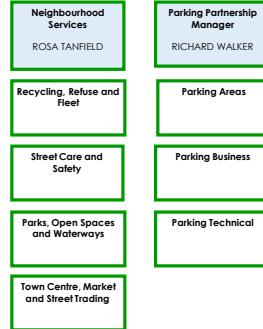
PA  
Maile Smith



Assistant Director - Environment

RORY DOYLE

PA  
Louise Coe



Managing Director  
PAUL SMITH

PA  
Antonia Culler

Finance Manager and Company Secretary  
ABBIE GOUGH

Senior Commercial Manager  
ALISTAIR WILSON



Colchester  
COMMERCIAL HOLDINGS

CCH is not a trading company but provides the senior management for its three subsidiary trading companies – Amphora Trading, Amphora Homes and Amphora Energy. The three subsidiary trading companies became effective from 2 January 2018, and staff TUPE'd across on 1 April 2018. Sport and Leisure services are also currently being managed by CCH's senior management.